

Connecting to Aztec's public ftp server

Connection details:

Server address: ftp.aztecuk.com

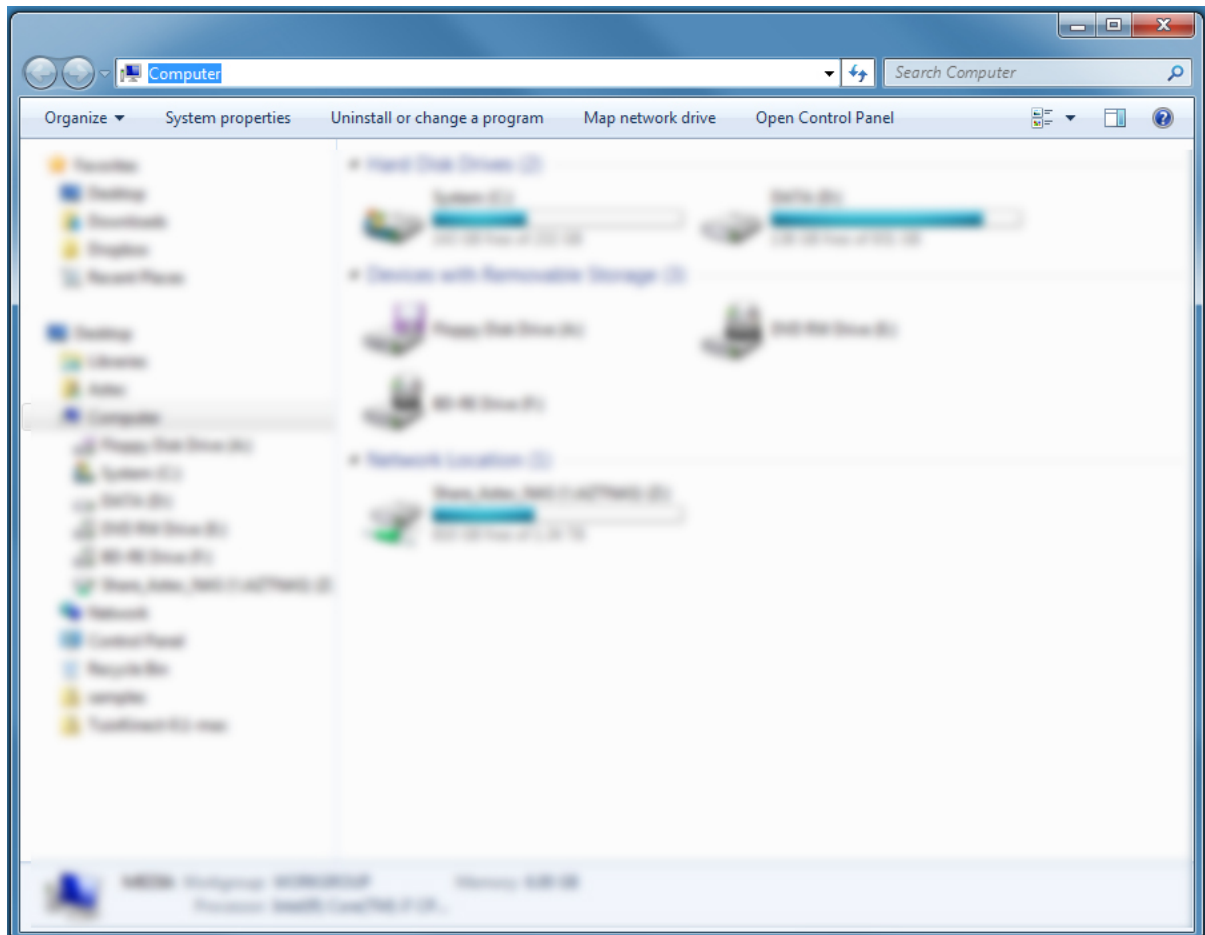
Username: azt-iis00\client

Password: Mitcham99

User name and password are case sensitive. This account has no right to delete.

Connecting using Windows operating systems

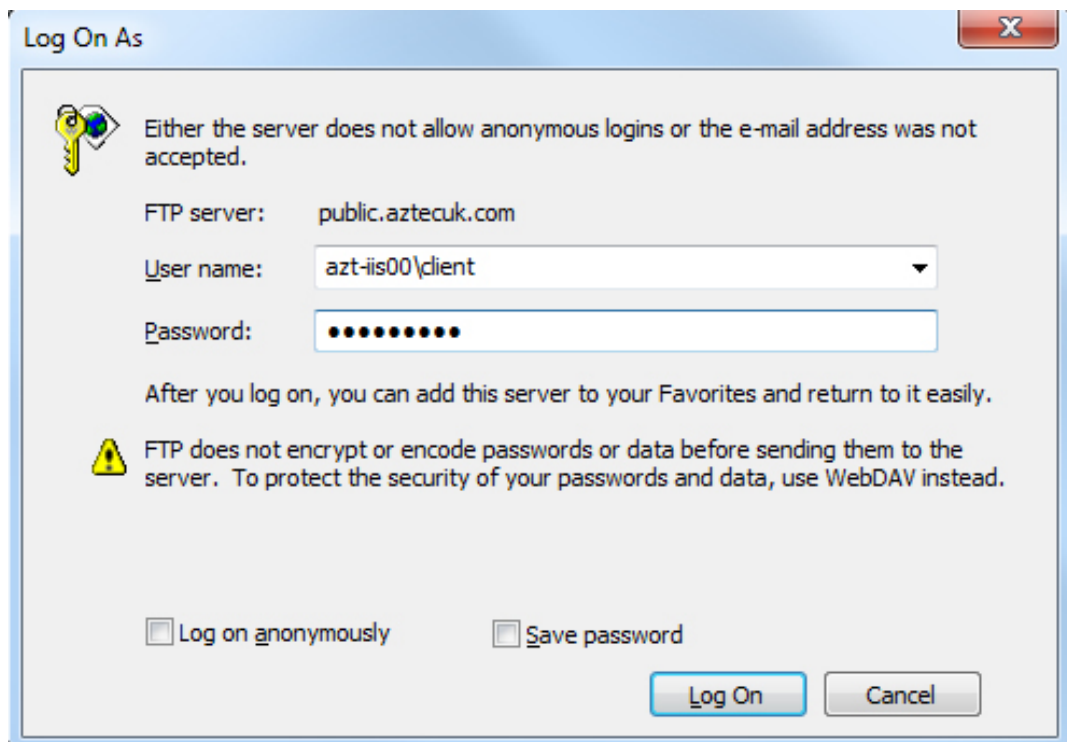
1. Open Windows Explorer or Double click on My Computer on the desktop.



2. Type or copy/paste the server address to the address field of the window, replacing "Computer".



3. Hit Enter.
4. You will be prompted for user name and password.

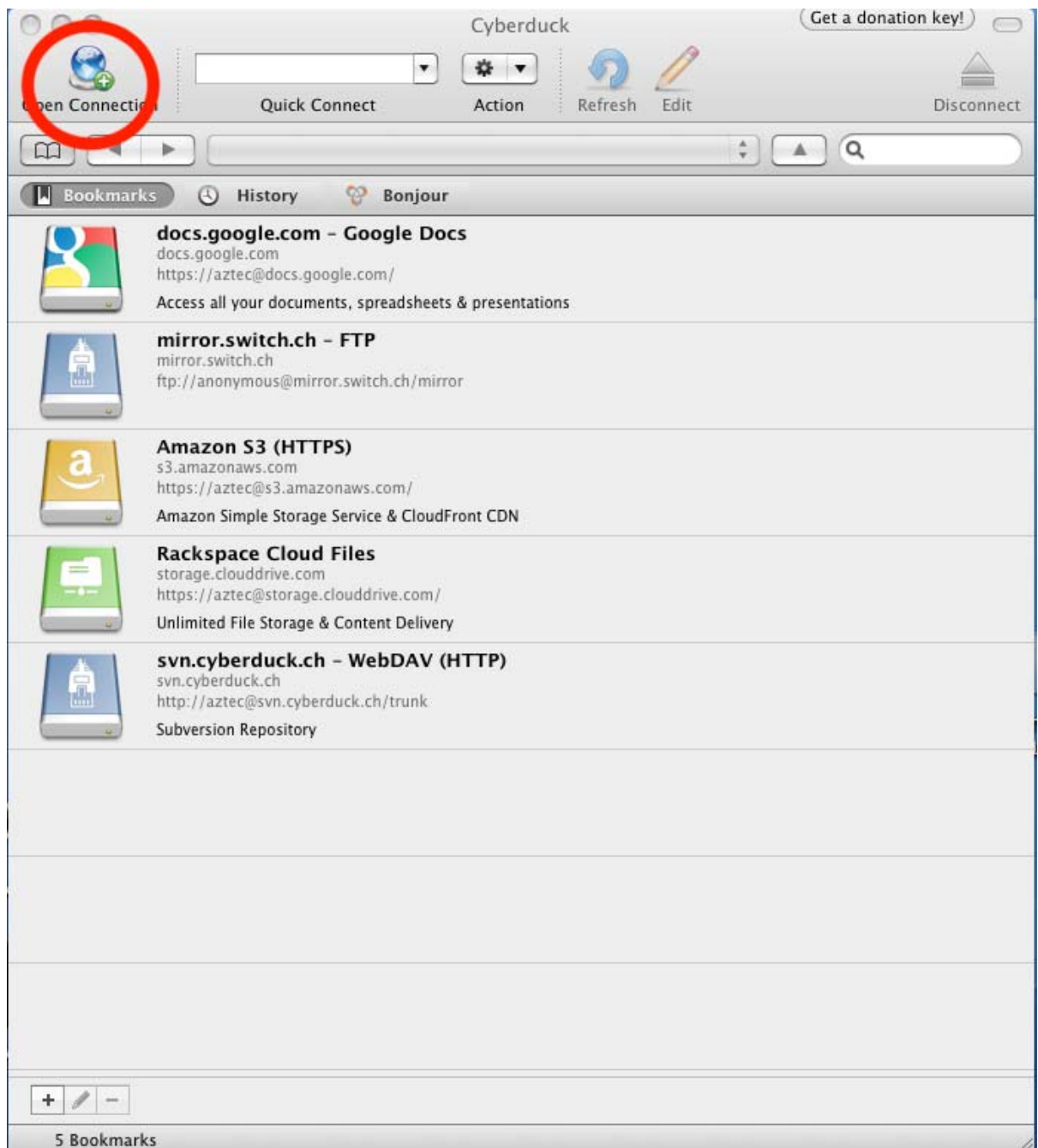


5. After clicking the Log On button you will see the folders on the server or will be in the folder created for you. Use only the folder name given by your contact. You can now copy/paste files to the folder or from it.

Connecting using OSX (Mac) operating systems:

For connection we suggest using the free ftp client called CYBERDUCK. Download available here:
<http://cyberduck.ch/>

1. After open Cyberduck click on the Open Connection icon.



2. Enter the followings:
 - Server name (1)
 - Check the port number (2). It must be set to 21.
 - Enter the user name (3)
 - Enter the password (4)
 - Select Passive transfer mode (5)
 - Click Connect (6)

The image shows a screenshot of an FTP (File Transfer Protocol) connection dialog box. The dialog is titled "FTP (File Transfer Protocol)". It contains several fields and options, with red numbers 1 through 6 highlighting specific elements:

- 1.** Server: public.aztecuk.com
- 2.** Port: 21
- URL: ftp://azt-iis00\client@public.aztecuk.com:21/
- 3.** Username: azt-iis00\client
- 4.** Password: [Redacted]
- Anonymous Login
- Add to Keychain
- 6.** Connect button
- 5.** Connect Mode: Passive (PASV)
- Encoding: Default
- Use Public Key Authentication
No private key selected

Buttons for "?", "Cancel", and "Connect" are visible at the bottom right. A "More Options" section is expanded at the bottom, showing a "Path:" field.

3. You'll see the folders on the server. Open the one given by your contact. You can drop your files in or copy files from the folder to your computer.

If connection fails:

- If you receive the address via email, do not click on the hyperlink. That will open your web browser and connection through the browser might not work. Use the methods described above.
- Check all the details for typos.
- Check if your internet connection is live and you have rights to access ftp sites from your network.